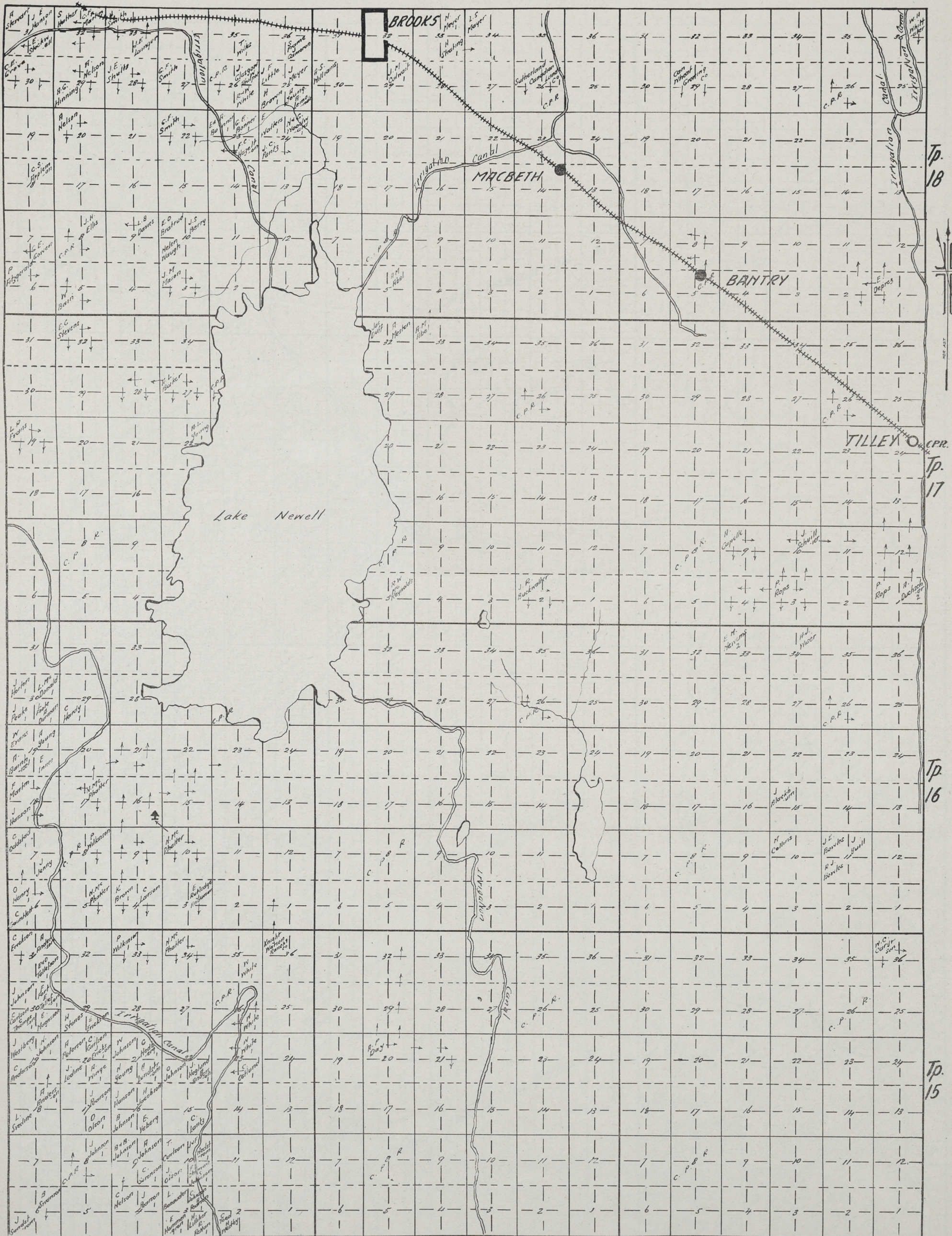


Price \$1.00

We have these Maps for any part of Manitoba, Saskatchewan or Alberta. Also Mailing Lists of all kinds. Write us for Map Making, Mounting, Draughting, etc.

The small figures under the name indicate the number of the Post Office.



R. 15

1. BROOKS
2. TILLEY

R. 14 W. of 4th M.

R. 13 Cummins Map Co. ALBERTA
WINNIPEG, MAN. 11-46